

PERMITTED ACTIVITIES

ALERT LEVEL 4



WHEN CAN I LEAVE MY HOME?

You must remain at home at all times, except to:

- Seek **medical care**
- Perform an **essential or permitted service**
- **Buy** permitted goods
- **Obtain services** that are **allowed to operate**
- **Walk, run or cycle** between 6am and 9am, within a 5km radius of your home
- **Move children** between homes where permitted



THE FOLLOWING RESTRICTIONS WILL REMAIN IN PLACE:

- Sit-in **restaurants** and **hotels**
- **Bars and shebeens**
- **Public** parks, beaches and swimming pools
- Conference and convention centres
- **Entertainment venues**, including cinemas, theatres and concerts
- **Sporting events**
- Religious, cultural and social **gatherings**



MOVEMENT BETWEEN PROVINCES AND DISTRICTS

Movement between provinces, metropolitan areas and districts is prohibited, except in the following circumstances:

- Workers performing an **essential or permitted service** who need to commute to work
- Any person who has **permission** to attend a funeral
- Any person who was not at their place of residence before the lockdown period and who could not travel during the lockdown will be permitted, **on a once-off basis, to return to their home**



MOVEMENT OF CHILDREN

- The movement of children **between co-holders of parental responsibilities** and rights or a caregiver is permitted within a metropolitan area or district
- Parents or caregivers must be in possession of a **court order**, a parental **responsibilities and rights agreement** or **parenting plan** registered with the family advocate, or a permit from a magistrate
- The movement of children between **different metropolitan areas, district municipalities or provinces is allowed** if the co-holders of parental responsibilities and rights or a caregiver is in **possession of a permit** issued by a magistrate
- The household to which the child moves must be **free of COVID-19**
- Any child who was not at the residence of their primary caregiver before the lockdown period and who could not travel during the lockdown will be permitted, on a once-off basis, to **return to the home of their primary caregiver**



WORKPLACE PROTOCOLS

- Employers must develop a plan for the **phased return** of their employees
- Stringent **health protocols** must be implemented at all workplaces
- Customers in retail stores must remain at least 2m apart

PERMITTED ACTIVITIES

ALERT LEVEL 4

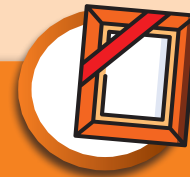


GENERAL MEASURES TO CONTAIN THE SPREAD OF THE CORONAVIRUS

- You must wear a **cloth face mask** or an item that covers the nose and mouth whenever you are in public
- No person will be allowed to use any form of public transport, or enter any building or premises, if they do not wear a cloth face mask or an item that covers the nose and mouth
- An employer must **provide every employee** who may come into direct contact with members of the public as part of their duties with a **cloth face mask**, or another **appropriate item** to cover the nose and mouth

Every business premises, including a supermarket, shop, grocery store, retail store, wholesale produce market or pharmacy shall:

- Determine their **area of floor space** in square metres
- Determine the **number of customers and employees** that may be inside the premises at any time with adequate space available
- Take steps to ensure that **persons queuing** inside or outside the premises are able to maintain a **safe distance** from each other
- Provide **hand sanitisers** for use by the public and employees at the entrance to the premises



FUNERALS

You may travel to attend a funeral if you are a:

- **Spouse or partner** of the deceased
- **Child** of the deceased, whether biological, adopted or stepchild
- **Child-in-law** of the deceased
- **Parent** of the deceased, whether biological, adopted or stepparent
- **Sibling**, whether biological, adopted or stepbrother or sister of the deceased
- **Grandparent** of the deceased

Attendance at a funeral is limited to 50 people, and a permit must be obtained from a magistrate or police station

During a funeral, all hygienic conditions and distancing measures must be followed to limit exposure of persons at the funeral to COVID-19



NOT PERMITTED ALCOHOL AND TOBACCO PRODUCTS

To safeguard the public:

- **The sale, dispensing and distribution of liquor is prohibited, and only transportation of liquor for export is allowed**
- **The sale of tobacco, tobacco products, e-cigarettes and related products is prohibited**



CLOSURE OF BORDERS

All **borders of the Republic remain closed** during the period of Alert Level 4, except for **designated ports of entry** and for the transportation of fuel, cargo and goods during the period of Alert Level 4

WHATSAPP SUPPORT
0600 123 456
EMERGENCY NUMBER
0800 029 999
sacoronavirus.co.za

SECTORS

ALERT LEVEL 4



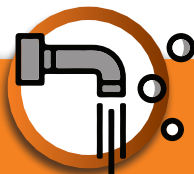
AGRICULTURE, FORESTRY AND FISHING PERMITTED

- All **agriculture**, hunting, forestry and fishing, bee-keeping, including preparation, cultivation, harvesting, storage, transport of live animals and auctions (subject to health directions) and related agricultural infrastructure and services (including research, inspection, certification and quality control)
- All **fishing**, operation of fish hatcheries and fish farms, on such conditions as may be issued in directions by the Cabinet members responsible for the environment, forestry and fisheries
- **Harvesting and storage activities** essential to prevent the wastage of primary agricultural, fishing and forestry goods
- **Export** of all agricultural, agro-processed, fishing and forestry products



MANUFACTURING PERMITTED

- Manufacture of **wholesale and retail products** permitted to be sold under Alert Level 4, and all input products, permitted scaling up to full employment, except where otherwise indicated, and subject to strict health protocols
- Manufacture of **paper and paper products**, excluding stationery, permitted scaling up to full employment and subject to strict health protocols
- Manufacture of **plastics and packaging**, including glass, plastic bottles and containers, permitted scaling up to full employment and subject to strict health protocols
- **Petroleum refineries, smelters and furnaces**, permitted scaling up to full employment and subject to strict health protocols
- Manufacture of **winter clothing, footwear, bedding and heaters** (and all inputs required, including textiles) permitted, commencing at 25% and scaling up to 50% employment and subject to strict health protocols
- Manufacturing of **automotives, steel and other metals, rail and ship building** (including components), scaling up in phases to 50% employment and subject to strict health protocols
- **Stationery production**, scaling up in phases to 50% employment and subject to strict health protocols
- **Cement, other construction material and hardware**, scaling up in phases to 50% employment and subject to strict health protocols
- **All other manufacturing**, scaling up to 30% employment and subject to strict health protocols



ELECTRICITY, GAS AND WATER SUPPLY PERMITTED

All **electricity, gas** and **water** supply is permitted



CONSTRUCTION PERMITTED

- Civil engineering for **public works projects** (including water, energy and sanitation)
- **Public works civil engineering and construction works**
- **Road and bridge projects**, including local road repairs
- **Critical maintenance and repairs**

SECTORS

ALERT LEVEL 4



WHOLESALE AND RETAIL TRADE, COVERING STORES, SPAZA SHOPS, E-COMMERCE AND INFORMAL TRADERS

- **Food products**, including non-alcoholic beverages and animal food
 - The sale of **hot cooked food**, only for home delivery
 - **Toilet paper, sanitary pads, sanitary tampons, and condoms**
 - Hand sanitiser, disinfectants, soap, alcohol for industrial use, household cleaning products, and **personal protective equipment**
 - Products for the **care of babies and toddlers**
 - **Personal toiletries**, including haircare, body, face, hand and foot care products, roll-ons, deodorants, dental care products
 - **Medical and hospital supplies**, medicine, equipment and personal protective equipment
 - **Fuel and lighting**, including coal, wood, paraffin and gas
 - **Airtime and electricity**
 - **Hardware components** and supplies
 - **Components for vehicles** undergoing emergency repairs
 - **Chemicals, packaging and ancillary products** used in the production of any products listed in this section
 - **Textiles** required to produce face masks and other personal protective equipment and winter clothing
 - **Winter clothing, footwear, bedding and heaters** and the components and fabrics required to manufacture these
 - **Children's clothing and fabrics** and components required to manufacture these
 - **Stationery and educational books**
 - **Personal ICT equipment** including computers, mobile telephones and other home office equipment
 - **No sale of liquor permitted**
- Directions may permit the **incremental expansion of e-Commerce**, taking into account the need to limit the extent of movement on the road, contact between people, law-enforcement challenges and the impact on other businesses



INFORMATION AND COMMUNICATION SERVICES

- All **telecommunication services** and infrastructure
- **Information and communication technology services** to support essential services
- **Postal services** and **courier services** related to **transport of medical products**



MEDIA AND ENTERTAINMENT SERVICES

- **Online services**
- Productions for **local broadcast** and **live streaming of creative sector services** in support of **COVID-19**, subject to directions
- **Newspapers** and **broadcasting**



ACCOMMODATION AND FOOD SERVICE ACTIVITIES

- **Accommodation not permitted**, except for **quarantine and essential services**
- Restaurants only for **food delivery services (9h00-19h00)** and subject to curfew (**no sit-down or pick-up allowed**).

SECTORS

ALERT LEVEL 4



FINANCIAL AND BUSINESS SERVICES

- Employees should **work from home** where possible
- **Essential financial services** may operate, **subject to directions issued** by the relevant Cabinet member, including the following services necessary to maintain the functioning of a financial system as defined in section 1(l) of the Financial Sector Regulation Act, only when the operation of a place of business or entity is necessary to continue to perform those services:
 - i. the **banking** environment (including the operations of mutual banks, co-operative banks, co-operative financial institutions and the Postbank)
 - ii. the **payments** environment
 - iii. the **financial markets** (including market infrastructures licensed under the Financial Markets Act, 2012 (Act No. 19 of 2012)
 - iv. the **insurance** environment
 - v. the **savings and investment** environment
 - vi. **pension fund** administration
 - vii. **outsourced administration**
 - viii. **medical schemes** administration
 - ix. additional services designated in terms of regulation 11B (4A) (c) (i)
- **The services listed above may not include debt collection services.**
- Services necessary for the **provision of social grants**
- **Private security services** may operate
- Implementation of **payroll systems**
- **Car sales** under specific directions
- **Chauffeur services, rental** of motor vehicles, driven vehicles, machinery and equipment, and of goods to support other Alert Level 4 services
- **Call centres**, for local and all international markets, may operate subject to directions issued by the relevant Cabinet members
- Other professional services may operate **only where work from home is not possible**, and only to support other Alert Level 4 services



TRANSPORT, STORAGE AND COMMUNICATION SERVICES PERMITTED

- **Ocean, rail, road and air transport of goods** permitted only for activities set out in Regulation 22(1)
- **Public rail, minibus taxi and bus services** will resume at Alert Levels and on terms as will be set out in directions, based on the progressive increase in commuter numbers during the various phases
- **E-hailing services** subject to restrictions on capacity and times, and for permitted activities only
- **Transport and logistics** in respect of specified cargo (specified in first point above), and permitted retail goods to neighbouring countries, which shall include all goods imported via SA ports of entry, for re-export to neighbouring countries



MINING AND QUARRYING

- **Coal production** for Eskom scaling up to full employment
- **Open-cast mining** scaling up to a baseline of 50% and thereafter scaling up to full employment
- **All other mining** starting in batches scaling up towards 50% employment



REPAIR AND RELATED EMERGENCY SERVICES PERMITTED

- **Tow trucks and vehicle recovery services**
- **Emergency repair work**, including plumbers, electricians, locksmiths, glaziers and roof repair work
- **Emergency automobile repairs** for all persons

SECTORS

ALERT LEVEL 4



SUPPLY CHAINS

- Production, manufacturing, supply, logistics, transport, delivery and critical maintenance and repair of goods and services (including components and equipment) **required for the production or rendering of permitted goods and services**
- **All workplaces or premises must have care and maintenance** that is essential to the prevention of the destruction or significant impairment of working areas, plant, machinery or inventory, or to permit orderly wind-down arrangements, on such conditions as may be issued by means of directions by the relevant Cabinet members



PRIVATE HOUSEHOLDS' EMPLOYMENT

- **Live-in staff**, and **staff providing care** to the sick, mentally ill, elderly, people with disabilities and children



HEALTH, SOCIAL AND PERSONAL SERVICES

- **Medical and veterinary** services permitted
- **Cleaning**, sanitation, pest control, sewerage, waste and refuse removal services
- **Recycling** of glass, paper, plastic, metal, tyres and such others as determined by directions are permitted at 50% capacity (informal recyclers permitted to resume operations)
- All **social work, counselling**, services supporting the prevention of gender-based violence, care and relief activities permitted
- **Wildlife management**, anti-poaching, animal care and veterinary services
- **Funeral services**, including mortuaries services and the transportation of mortal remains
- **Trade union essential staff** for workers covered by Alert Level 4, subject to directions



PUBLIC ADMINISTRATION, GOVERNMENT SERVICES AND OTHER ARMS OF THE STATE

Only essential government and administration services may operate, including:

- Disaster management services
- Licensing, permitting, deeds, masters offices, birth and death certificates, re-placement identification documents
- Any other service designated by the Executive Authority, HODs, Heads of Courts, and Heads of other Chapter 9 Institutions
- Essential municipal services
- Services related to the functioning of courts and the State Capture Commission
- Essential SARS services defined by the Commissioner of SARS
- Police, peace officers, traffic officers, military medical personnel and soldiers, correctional services officials and traffic management services
- Services rendered by the Executive, Members of Parliament, Members of the Provincial Legislature, Members of Local Councils, the Judiciary, traditional leaders and National Office Bearers of Political Parties represented in Parliament
- Commissioners of the South African Human Rights Commission, Gender Commission, the Commission for the Promotion and Protection of the Rights of Cultural, Religious and Linguistic Communities, the Public Protector and Deputy Public Protector and the Independent Electoral Commission



EDUCATION SERVICES

Permitted on dates and schedule set out separately

