

CORONAVIRUS UPDATE

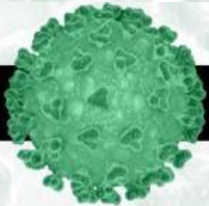
What is a lockdown?



A lockdown is an emergency protocol that requires South Africans to stay at home except for essential purposes.

Grocery stores, pharmacies, banks and other essential industries will remain open.

All non-essential activities are suspended.



CORONAVIRUS UPDATE

What is the purpose of a lockdown?

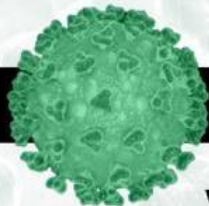


The nation-wide lockdown is necessary to fundamentally disrupt the chain of transmission.

It will prevent the spread of the virus and save the lives of South Africans.

Emergency Hotline: 0800 029 999

WhatsApp Support Line: 0600-123456

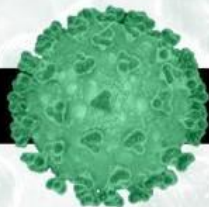


CORONAVIRUS UPDATE

What happens if you break the rules?

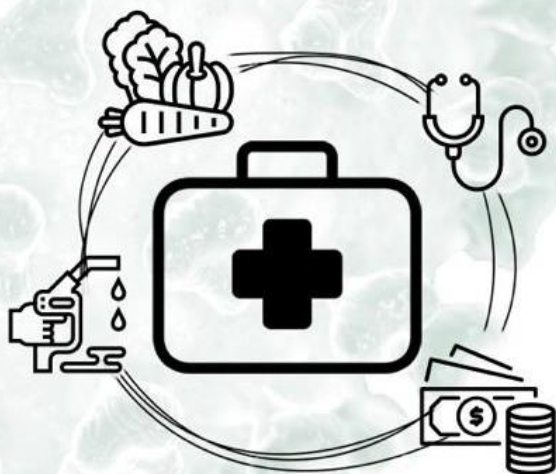


Anyone breaking the rules could be punished with imprisonment for up to one month or with a fine.



CORONAVIRUS UPDATE

What will I be able to do under lockdown?

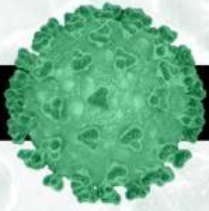


You will be able to:

- Seek medical care
- Buy groceries
- Visit the pharmacy
- Access banking services
- Get petrol
- Collect a social grant

Emergency Hotline: 0800 029 999

WhatsApp Support Line: 0600-123456



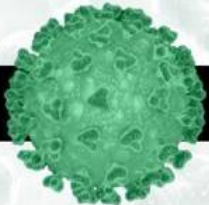
CORONAVIRUS UPDATE

Who will remain at work?



A list of essential services will be published, including pharmacies, banks, supermarkets, petrol stations and health care providers.

Companies that are essential to the production and transportation of food, basic goods and medical supplies will remain open.



CORONAVIRUS UPDATE

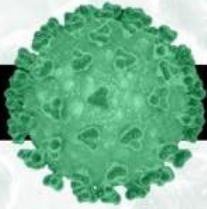
What if you have an emergency?



Emergency services, including doctors, clinics, hospitals and pharmacies, will continue to operate as usual.

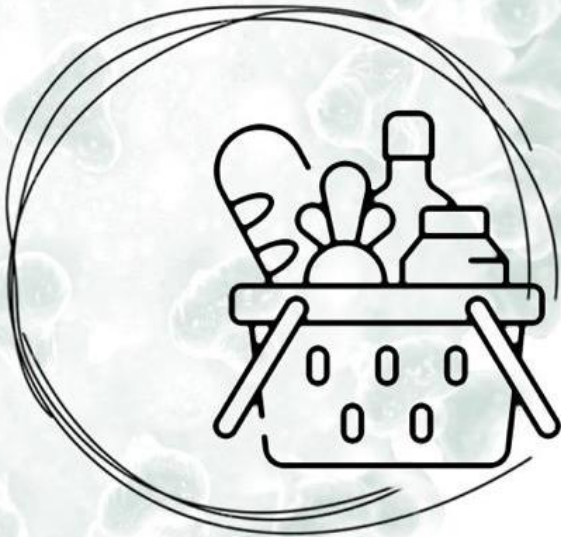
Emergency Hotline: 0800 029 999

WhatsApp Support Line: 0600-123456

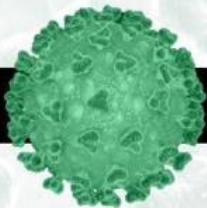


CORONAVIRUS UPDATE

Should you stock up now?



Grocery stores and banking services will remain open throughout the lockdown period.



CORONAVIRUS UPDATE

Can you go to work?



A list of essential services will be published, including pharmacies, banks, supermarkets, petrol stations and health care providers.

Companies that are essential to the production and transportation of food, basic goods and medical supplies will remain open.

Emergency Hotline: 0800 029 999

WhatsApp Support Line: 0600-123456